



Forward Thinking, High Achieving.

# LEWIS & CLARK ELEMENTARY SCHOOL

Our proposal addresses areas of critical need, including ADA compliance, additional classroom space, traffic safety and a more collaborative, dynamic environment.



A systemwide initiative to develop schools that work smarter for our students.

MEET YOUR  
SMART SCHOOLS  
TEAM

The Lewis & Clark Elementary School team put months into this process. We appreciate the input from students, parents, faculty, neighbors and the MCPS board. If you have questions or would like to get involved, we encourage you to visit [www.mcpsmt.org/lewisclark](http://www.mcpsmt.org/lewisclark) or contact Principal Susan Anderson at [sanderson@mcps.k12.mt.us](mailto:sanderson@mcps.k12.mt.us).

TEAM MEMBER CORE

Elise Brinkman, Student  
Margaret Petty, Teacher  
Margaret Dennison, Parent  
Susan Anderson, Administrator  
Kent Watson, Business/Community  
Bridget Allen, Classified  
Tony Moretti, Business/Community

TEAM MEMBER  
EXPANDED

Tyler Delridge, Student  
Becky Cox, Teacher  
Morgan Towery, Classified  
Tyron Venn, Parent  
Todd Henry, Parent  
Gharrett Swanson, Business/Community

21ST CENTURY NEEDS

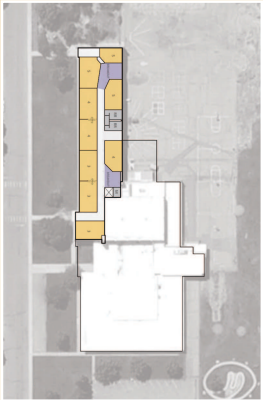
Lewis and Clark Elementary School, originally built to serve 400 students, has now grown to average enrollments of 480-490 students. Overcrowding, logistical difficulties and an undersized lunchroom impede student learning and inhibit the school system's vision of 21st century teaching and learning.

In order to address these key issues, Lewis and Clark plans to reconfigure its library, cafeteria and classrooms, as well as pursue moderate expansion.

EXPANDING LEWIS & CLARK  
ELEMENTARY SCHOOL

Our proposed option to expand Lewis & Clark will serve students, teachers and staff well. It matches our focus on 21st century teaching and learning. It is fiscally prudent, in that it addresses key issues now, while enabling the school to evolve classroom and collaborative space as needs and population change in the future. When complete, Lewis and Clark will be a smarter school in many ways, including:

- ADA compliance throughout the facility, including an elevator to the second floor.
- A secure and safe front entrance and pickup area for students, parents, staff, visitors and guests.
- An appropriately sized lunchroom, where children can take the necessary time they need to get the nutrition they need.
- A larger and more flexible library space that can keep up with technology and be used in numerous ways.
- Superior collaboration spaces for students, teachers and parents.
- Wireless Internet access for classes and staff.



OUR TEAM'S RECOMMENDED OPTION

OPTION E-2 EXPAND:

- Improve classroom space.
- Improve library space.
- Improve lunchroom space.
- ADA accessibility upgrades.
- Technology improvements.
- Replace roof.
- Heat distribution.
- Safety and security improvements.

SECURITY

Modify facility to create obvious main entry, secure waiting area and ability to observe visitors approaching the building. Subdivide the building into secure zones with electronically activated door closers.

TECHNOLOGY

Develop high-speed/high-volume fiber optic distribution to breakout spaces for projects, presentations and technology in each learning community, enhanced with robust wireless and hard-wired access points.

ENVIRONMENT

Install barn doors and garage doors with quality acoustical materials between learning areas and breakout areas for projects, presentations and technology. Create small learning communities for teams of teachers and students that include traditional classrooms as well as important support spaces for 1:1 tutoring, small groups, planning centers, storage, etc.

FACILITIES STRATEGIC PLAN

Site Area: 8.59 acres  
Parking Spaces: 20  
Building Square Footage  
Existing: 60,413  
New: 2,250  
Estimated Project Budget: \$6,582,722\*  
Remaining Deferred Maintenance & Energy Project Costs: \$0  
Rental / Lease / Sale Income: None  
Current Enrollment: 481  
Future Peak Enrollment: 500  
Capacity: 450-500  
Accessible Capacity: 450-500  
Accessible / Permanent Capacity: 450-500

\*All costs are projected based on industry averages for building costs, sizes and land prices. Final project budget will be developed during the design phase.





## NOW IS THE TIME TO INVEST IN SMARTER SCHOOLS

Education has never been more important than it is today. Our students face international competition for scholarships and jobs, and an increasing pace of change that impacts their futures. Yet, while the need for quality education continues to increase, our schools are physically in decline.

At Missoula County Public Schools, we realize that we must change if we're to keep up academically and economically as a community. That's why we launched Smart Schools 2020. Led by teams from each school, the initiative assesses needs by facility and prioritizes those needs in light of achieving our goals of a 21st Century Educational Culture and of being fiscally responsible.

By addressing schools now we prevent further deterioration of facilities, better prepare for population growth and ensure our students continue to get the educational opportunities they need to succeed in school and beyond.

## THE SMART SCHOOLS PROCESS

### **SCHOOL CENTRIC:**

Criteria and preferred options were established for each school by a team of teachers, administrators, students and parents from that school, along with members of the Missoula community.

### **COLLABORATIVE:**

Alternatives were shared at public meetings at each school. In addition, surveys were sent out systemwide to vet priorities.

### **REALISTIC:**

Team recommendations were reviewed by the steering committee and the elected board of trustees before a bond measure was drafted.

### **PUBLIC:**

Everyone is invited to review options and weigh in. Final support for the initiative will be determined by public election in November 2015.



To get involved, please visit [www.mcpsmt.org/lewisclark](http://www.mcpsmt.org/lewisclark) or contact Principal Susan Anderson at [sanderson@mcps.k12.mt.us](mailto:sanderson@mcps.k12.mt.us).